

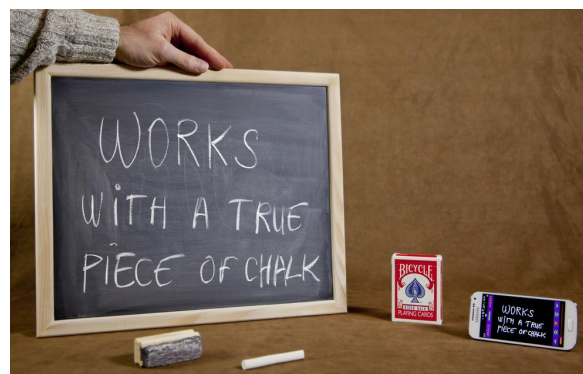
PSYCHIC MEDIUMBOARD & MAXIBOARD

INSTRUCTIONS

Medium Whiteboard & Chalkboard:



Maxi Whiteboard & Chalkboard:



We are glad to count you among the owners of the Psychic Board (Medium or Maxi)!

Before using your Psychic Board, please take time to read all the instructions (Psychic Boards app's PDF included). They are very easy but each step has to be followed precisely.

If certain elements are not clear, do not hesitate to email us at info@magikdata.com

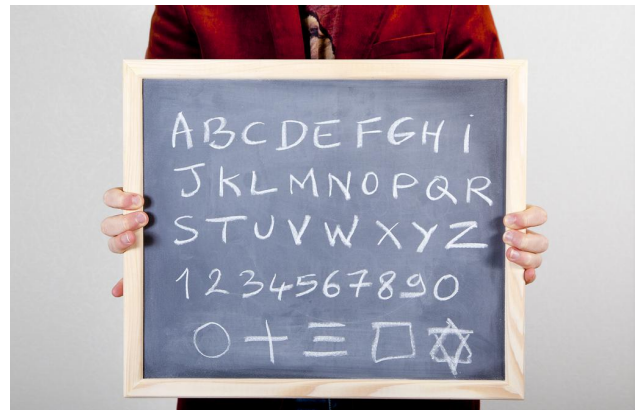
CONTENTS

1	INVENTORY OF THE RECEIVED ELEMENTS	2
2	OPERATING METHODS OF THE BOARD.....	3
1	ON/OFF magnetic switch	
2	Inserting the battery	
3	General battery information	
4	Tips and recommendations	

1

INVENTORY OF THE RECEIVED ELEMENTS

First, make sure that you have received all of the parts, depending on which Board you ordered:



Whiteboard:

- The Mediumboard or Maxiboard
- 1 battery
- 1 elastic band (with magnet)
- 2 dry erase markers
- 1 eraser
- 1 charger
- 1 EU, UK or US adapter (if applicable)

Chalkboard:

- The Mediumboard or Maxiboard
- 1 battery
- 1 elastic band (with magnet)
- 1 box of chalk
- 1 eraser
- 1 sponge towel
- 1 charger
- 1 EU, UK or AU adapter (if applicable)

Note: For the most authentic result possible, we add a patina to our Chalkboards. We use an adhesive veneer that after many uses mimics a true chalkboard. For the audience, it has to be a simple chalkboard with no particular value.

2 OPERATING METHODS OF THE BOARD

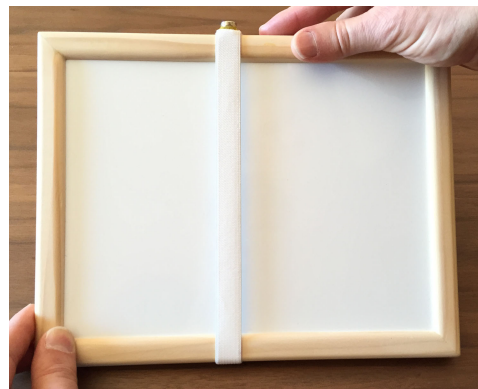
Note: In order to make the instructions as clear as possible, we describe only one type of Board below. Although the Medium Whiteboard is the only one photographed, everything is identical for the three other Boards.

① ON/OFF magnetic switch

Before learning how to insert the battery in the Board, here are a few words about the ON/OFF magnetic switch.

a) How to TURN OFF the Board:

Place the elastic band with the magnet over the pinhole in the frame.



b) How to TURN ON the Board:

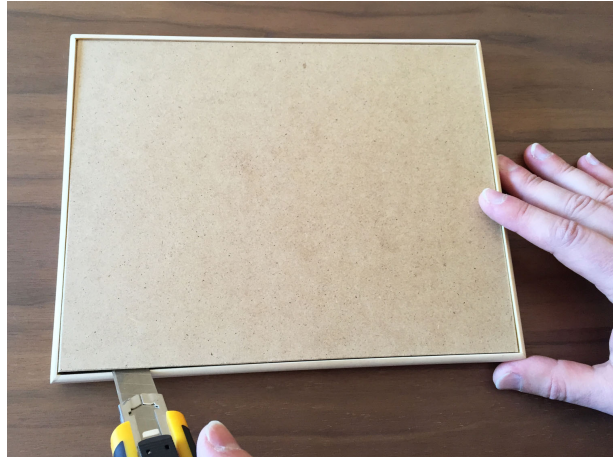
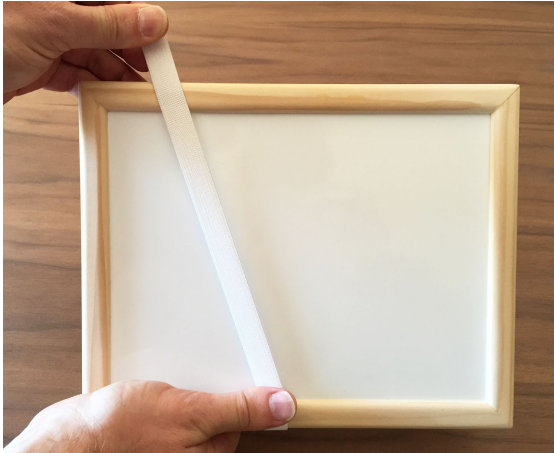
Remove the magnet (the elastic band on which the magnet is glued). Use caution to reduce the risk of losing control of the elastic band when turning on/off the Board.



② Inserting the battery

Now that you know how to use the magnetic switch, let's see how to insert the battery in the Board.

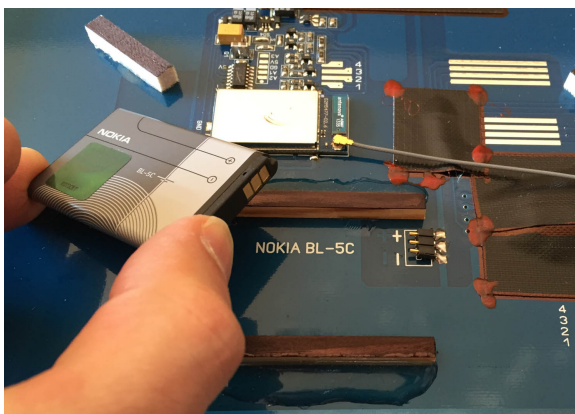
- a) Take off the elastic band and **turn the Board upside down**.
- b) **Put a thin blade (or plastic card)** between the wooden frame and the back panel. Choose the side where you have the most space to insert the blade and lever up to loosen the back.



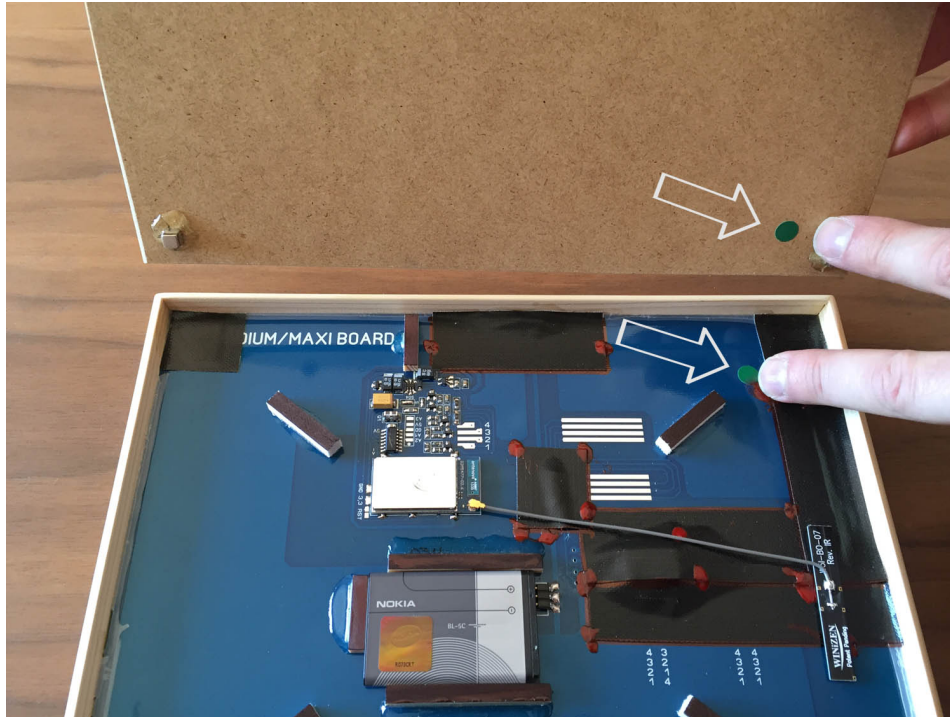
- c) **Carefully remove the back panel held by 4 magnets** (more for the Maxiboard).



- d) The electronic board is in front of you. **Do NOT touch the components with your fingers!** The battery has 3 contact panels. Place the battery such that the contact panels are touching the 3 contacts on the Board.



- e) **Because the back has a precise position, align the color-code dots** (green dot in front of green dot, etc.) Replace one edge of the back panel first and then slowly drop the other sides. It will stay in place thanks to the magnets.

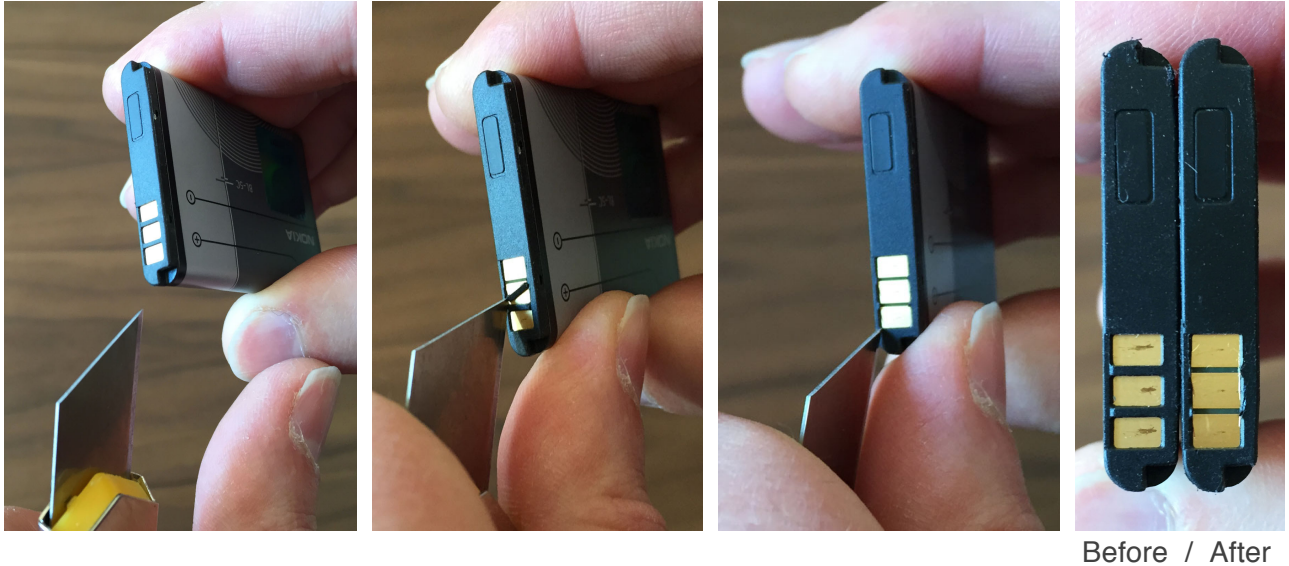


- f) **Your Board is ready to use!**



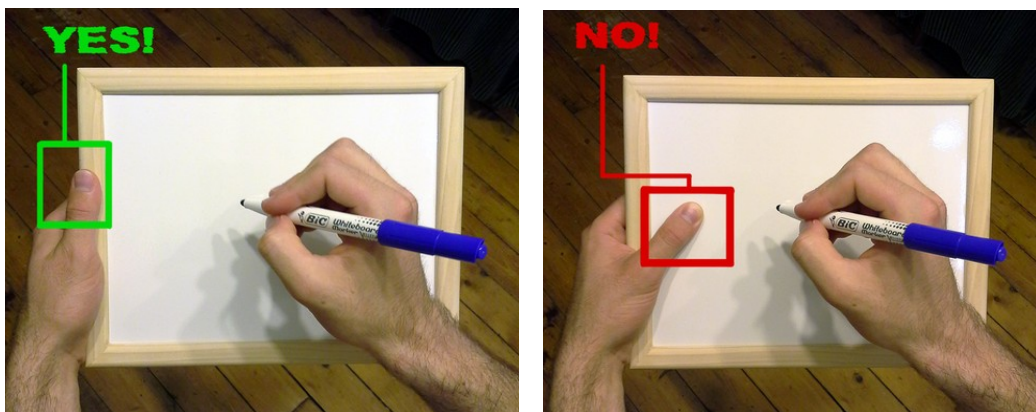
③ General battery information

- a) **Maximum charging time:** 2 hours. Do not charge the battery all night.
- b) **Life of the battery fully charged:** 4 to 5 hours depending on the intensity of use.
- c) **Which replacement batteries to purchase:** These are common inexpensive Nokia BL-5C batteries available on Amazon, for instance. **Remove the 2 plastic separations** between contact panels on new batteries before use:



④ Tips and recommendations

- a) **How to hold the Board**



While you write or draw, do not press other fingers on the sensitive surface at the same time.

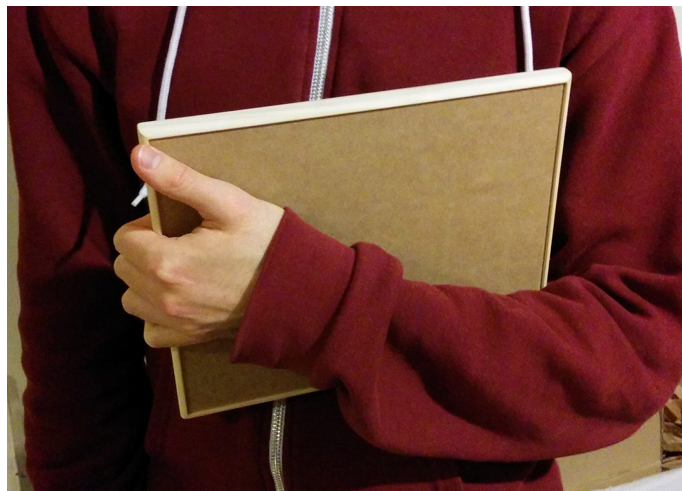
Here is just one idea of how to obtain this from your spectator:

- First ask them to draw **a large circle**.
- "This circle will allow you to concentrate your mind..."
- Then ask them to draw or write something **inside this circle**.
- Unconsciously they will not touch the surface to avoid erasing the circle with their hand!

For more tips, watch the exclusive videos of **Colin McLeod**, **Docc Hilford**, **Gerry McCambridge** and **Luc Langevin**.

Other good holding positions

With the Medium board:

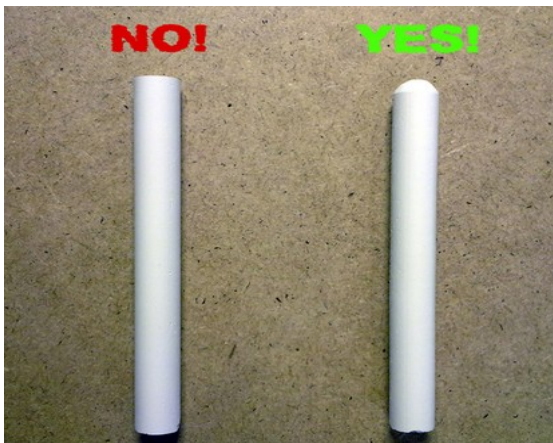


With the Maxiboard:



The Maxiboard, regarding of its size, is more practical performed on an easel (see Gerry McCambridge video for example).

b) How to prepare the piece of chalk (only for Chalkboards):



Both ends of the piece of chalk must be rounded in order not to deeply scratch the chalkboard surface. Accomplish this using sand paper or writing on another surface until ends are rounded.

Avoid buying chalk labeled “hard”. Soft or extra soft are better. We recommend Carrefour or Office depot.



However, it is normal to have some scratches on the surface even with a rounded piece of chalk. **A slightly moistened sponge will remove most debris.** No chemicals should be used to clean the surface.

c) Precautions of use:

Be careful not to hit or drop the board.

When you do not use the board, store it flat (horizontal), writing surface above. Do not store it upside down or vertical. Do not store it in a humid area.

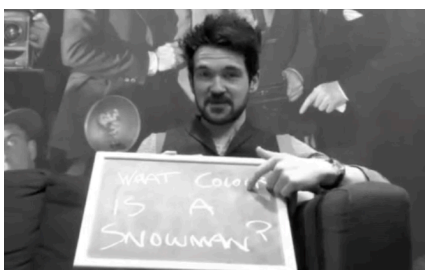
If you put it in a case, make sure the board is not pressed too hard on the edges by foam or other material.

When you want to clean the surface of your Board, do NOT use any chemical products!

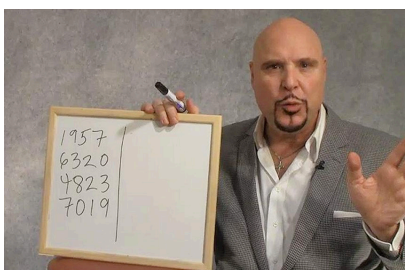
Black dry erase markers (for the Whiteboards) are sometimes more difficult to erase. Avoid black.

Remember, **you can also use your fingernail** but the pressure from your fingertip alone won't be enough.

d) Exclusive videos:



Colin McLeod



Docc Hilford



Gerry McCambridge

Colin McLeod, Docc Hilford and Gerry McCambridge spoil us!

They offer new ideas and suggestions about the Board in 3 exclusive videos. You can watch them here:

<https://magikdata.com/notices-us-psyhic-medium-maxi-boards-white-chalk.php>

WARNING: Our products contain chemicals known to the State of California
to cause cancer and/or birth defects or other reproductive harm.
For more information visit <https://www.p65warnings.ca.gov/>